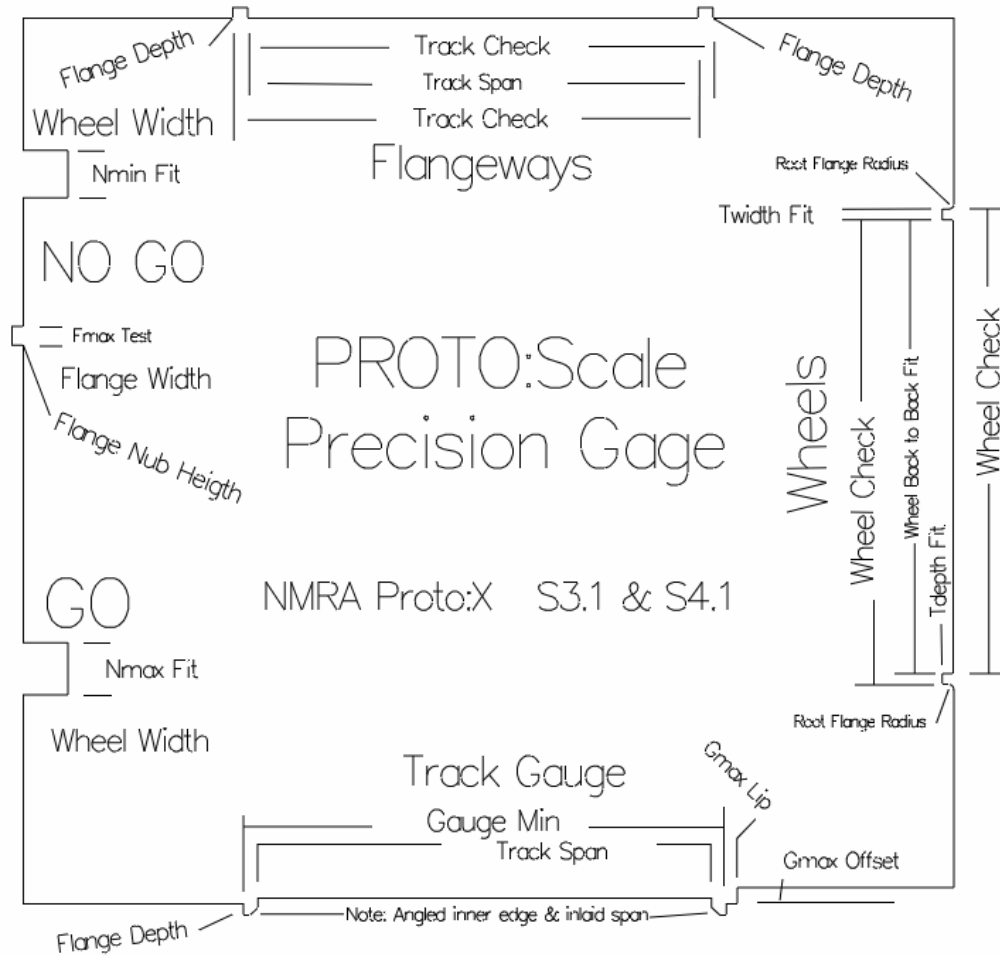


## Proto:64 Gage Specifications



### Proto:64 Precision Gage Dimensional Specifications

#### **TRACK GAUGE:**

Track Gauge MIN: 0.884" +/- 0.001"  
 Track Span: 0.823" +/- 0.001"  
 Gmax Lip: 0.017" +/- 0.001"  
 Gmax Offset: 0.030" +/- 0.002"  
 Flange Depth: 0.019" +/- 0.001"

#### **FLANGWAYS:**

Track Check: 0.852" +/- 0.001"  
 Flange Depth: 0.021" +/- 0.001"  
 Track Span: 0.823" +/- 0.001"

#### **NO GO:**

Flange Nub Height: 0.020" +/- 0.001"  
 Fmax Fit: 0.028" +/- 0.001"  
 Nmin Fit: 0.087" +/- 0.001"  
 Slot Depth: 0.100" +/- 0.002"

#### **WHEELS:**

Wheel Check: 0.849" +/- 0.001"  
 Wheel Back to Back Fit: 0.826" +/- 0.001"  
 Root Flange Radius: 0.008" +/- 0.001"  
 T depth Fit: 0.019" +/- 0.001"  
 T width Fit: 0.019" +/- 0.001"

#### **GO:**

Nmax Fit: 0.089" +/- 0.001"  
 Slot Depth: 0.100" +/- 0.002"

#### **NOTE:**

**Gage Instruments have a tighter specification for construction than standards specification – the biased deviation overlap allowances are built in.**