

3/16" SCALE
50' OUTSIDE BRACED BOXCAR

INSTRUCTION BOOKLET



!#@*?! TRAIN STUFF

**175 MONMOUTH BLVD.
OCEANPORT, N.J.
07767**

Acknowledgement

We would like to thank the following people for making this kit a reality.

Ruth Allardice
John Bortz
Dennis Dobler
Robert Dusseault
James Doyle
Mike Gallagher
Walter Graeff
Charles Kenyon
Mr. Kohut
Liberty Models
Jerry Morgan
Jan Lorenzen
Ken Rice
Howard Sandusky
Gale Hall
Don Thompson sr.
Steve Topaz
Ron Wintress
John Kehoe and staff

Thank you one and all.

Robin and Don Thompson

INTRODUCTION

#24901 Railbox

This Kit was designed from the Pullman-Standard model XPF11A 50' Outside braced box car. These were made for the American Rail Box Car Company, a subsidiary of Trailer Train Co. which is headquartered in Chicago. These cars have a AAR plate "B" clearance for unrestricted interchange of products. These cars first apperared in October 1974 and there are over 15,000 cars now on the roads. In addition to the ones built by Pullman-Standard, cars are also built by American car Foundry, Berwick Forge & Fabricators, Pacific car & Foundry and the Marine and Rail equipment division of FMC.

Cover

This car was on a siding along the Redbank-Lakewood line of the C.R.R. of N.J. (now Conrail). This is the same line the Blue Comet used 35 years ago.

#24901 RAILBOX

50' Outside brace box car kit

Unpack and inspect kit against the parts list. If anything is missing or damaged, contact us now for replacement. Read the instructions thoroughly and familiarize yourself with the parts and sequence of assembly. For a smooth metal like finish, use two coats of sander sealer on the roof and stripwoods. Sand with 00 steel wool or fine sandpaper after each coat.

Roof Detail

Using the 1/32" x 1/32" stripwood cut and cement two pieces to form the overhang for the ends of the roof. Measure and cut 14 roof braces from the 1/16" tee section (refer to scale drawing on center page). Cement braces on one side of roof, wait till dry then score the center of the brace with a blade. Glue, bend and hold with paper clips. Ends of roof braces can now be trimmed and rounded. Cement the P-S style roof sections (these are X style) in place.

Side Detail

Drill holes in notched corners for sill steps using 1/32" drill bit. These can also be soldered or epoxyed. Clean steel sides with straight vinegar to remove the protective layer. This will allow the paint to adhere to the metal. Now attach the sill steps by pinning or other methods described. Use 3/32" x 3/64" for top brace, leaving about 1/8" overhang on either side. Cut the 20 outside braces using the 5/64" X

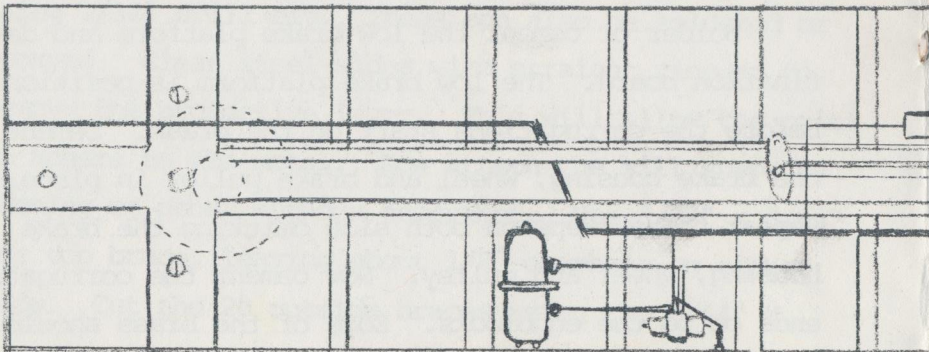
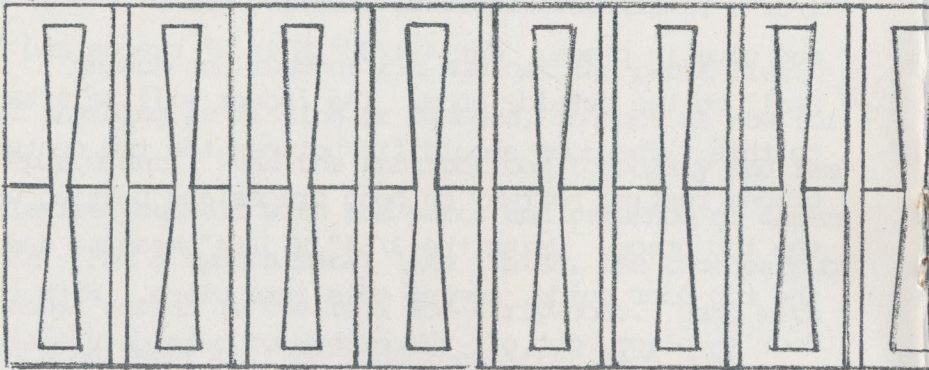
1/32", referring to the scale drawing on the center page and glue in place. Cut 4 1/32" X 1/32" braces and install on the outside ends. The ladder will be attached to this. The door should fit between the two center braces resting partway on both braces and butting on the top brace. Using the 3/64" X 3/64" measure and cut the top door guide. cement this into place. With the door in place, cut off the excess of outside braces, so that they are the same length as the door. Construct the lower door guide using the 3/64" X 3/32" wood. Add the door hasp to the lower security device. Do not install door now, install after the car has been painted.

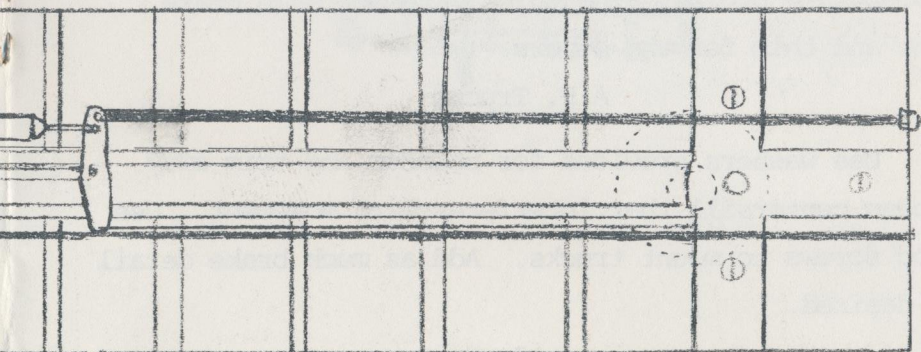
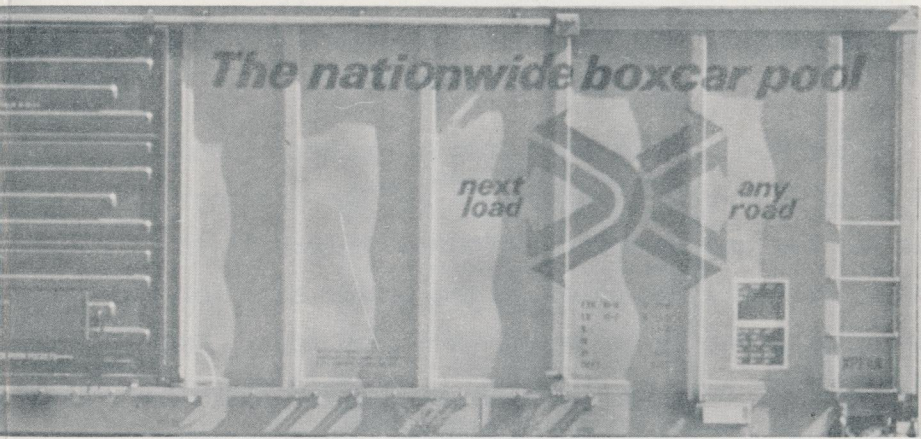
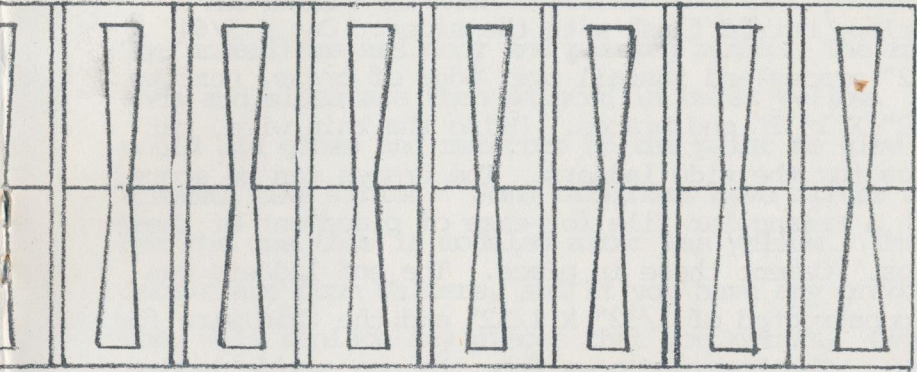
Underbody

Cement the roof to the endblocks keeping the undercut of the roof flush with the outside of the endblocks. Cement the floor to the endblocks also keeping it flush with all the edges. Cement the sides to the underbody frame assembly, keeping the outside edge flush with the endblocks.

End details

Solder or cement the low brake platform and destination board. The low brake platform is positioned before the corrugations start on the brass. Cement the brake housing, wheel and brake pulley in place. Repeat these steps on both side omitting the brake housing, wheel and pulley. Now cement the corrugated ends on to the endblocks. Edge of the brass should





overlap, but be flush with the sides. Cut $4 \frac{5}{64}$ " X $\frac{1}{32}$ " braces and install over edge of brass, next to $\frac{1}{32}$ " X $\frac{1}{32}$ " end braces. Using the thin wire, cut rungs for the side ladders. The braces can be scored with a triangular file for ease of placement of these rungs. Cement these in place. The end ladders can be constructed of $\frac{1}{32}$ " X $\frac{1}{32}$ " and the thin wire for rungs. The top rung goes from the one outside ladder side all the way across to the other side. A small piece of thick wire can be made into a support for this top rung.

Underframe Detail

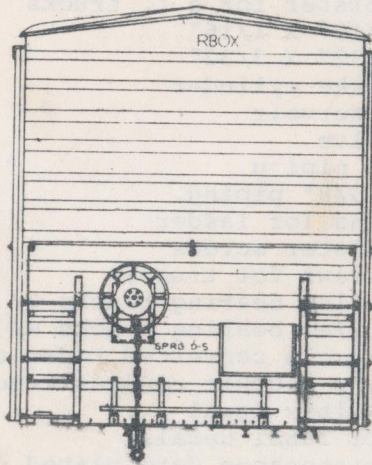
Place the bolster with coupler pocket extending end by $\frac{3}{32}$ " (this is different the the drawing). Measure, cut and cement the grooved centersill in place. Pre-drilling holes in the center sill for the brake piping before cementing is a good idea. Use $\frac{5}{32}$ " X $\frac{3}{32}$ " to make the large braces and install. Use $\frac{1}{16}$ " X $\frac{3}{32}$ " to make the 12 small braces and install. Cement the brake system and levers with appropriate piping. The thick wire for main brake line and thin for the others.

A.F. Trucks

Use washers provided for bolster and trim away excess centersill that interferes with movement. Use wood screws to mount trucks. Add as much brake detail as desired.

Painting

The entire car can be primed with zinc primate. The underframe and door and painted black. The roof, ends and sides are then painted in refer yellow. I would add gloss and retarter to the paint to give it a metal like finish. Some railboxes have silver roofs but the one this is modeled after was yellow. The decals are from Walters, and if you have any problems, they will replace any pieces that you return. Oversp-
ray the decals with a dull or gloss finish to hide the decal film.



Parts List

Railbox 50' Outside Braced Boxcar

1	PA40T002	Modern style roof	\$0.75
3	PA40N129	tee for roof ribs	0.13
13	PA40D001	P-S roof panels	0.50
1	PA40N001	1/32" X 1/32"	0.05
5	PA40N007	5/64" X 1/32"	0.25
2	PA40T001	Door	1.00
2	PA40T003	P-S sides	1.00
1	PA40N003	3/64" X 3/64"	0.05
3	PA40N012	3/32" X 3/64"	0.18
4	PA40S201	End sill steps	0.55
2	PA40T008	end blocks	0.25
2	PA40T004	corrugated brass ends	0.50
2	PA40L207	Brake platform	0.25
1	PA40L116	ajax brake housing	0.09
1	PA40L115	brake wheel w/ levers	0.15
2	PA40T005	destination boards	0.10
1	PA40T006	floor	0.40
1	PA40N370	Grooved center sill	0.25
2	PA40A060	Bolster	0.25
2	PA40T014	Bolster for a.f. trucks	0.10
1	PA40N013	3/32" X 1/16"	0.06
1	PA40N041	5/32" X 3/32"	0.12
1	PA40L118	brake cylinder	0.15
1	PA40L118	Reservoir	0.12
1	PA40L120	valve	0.08
2	PA40T009	1" piping	0.10
1	PA40T010	1 5/8" piping	0.10
8	PA40T011	pins for ladder	0.10
4	PA40T012	bolster screws	0.10
2	PA40T013	screws for trucks	0.10
2	PA40A252	Roller bearing trucks w/ scale	2.95
2	PA40A253	Roller bearing trucks w/ hirail	2.95
2	PA40V005	s-scale converted kadee couplers	1.10
2	PA12A051	A.F. knuckle coupler trucks	3.00
1	PA40W320	Railbox decal	1.15
2	PA40D002	ACI label decals	0.10
4	PA40D003	Maintenance data plated decals	0.20
1	M24901	Instruction booklet	1.00

Orders under \$10.00 please include \$1.00 for postage

The Mad Trainman



