

ASSEMBLY INSTRUCTIONS FOR "S" GAGE 40' WOOD SHEATHED REFRIGERATOR CAR

MANUFACTURED BY

MIDGAGE MODELS, INC.

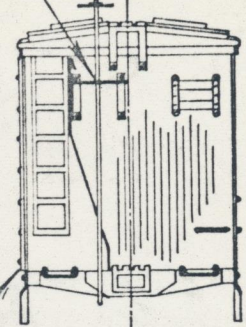
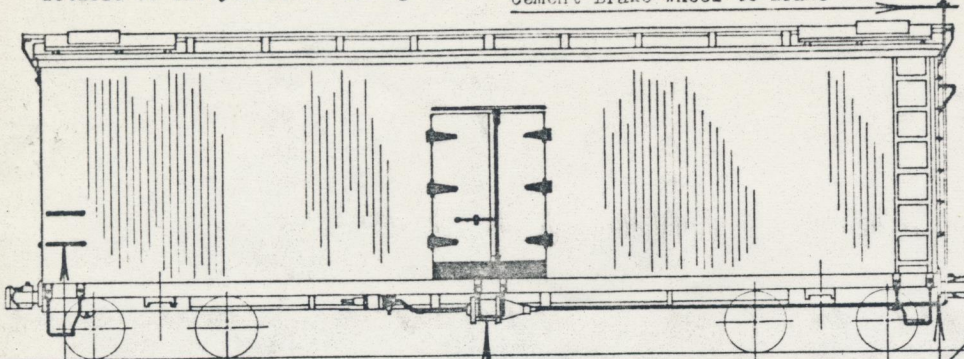
PORTSMOUTH, R. I.

P. O. BOX 1044

Study drawings and instructions carefully before starting to assemble car. See supplementary instructions for specific details of car you are building

Cement Brake Wheel to Brake Staff

Notch or drill brake platform for brake staff

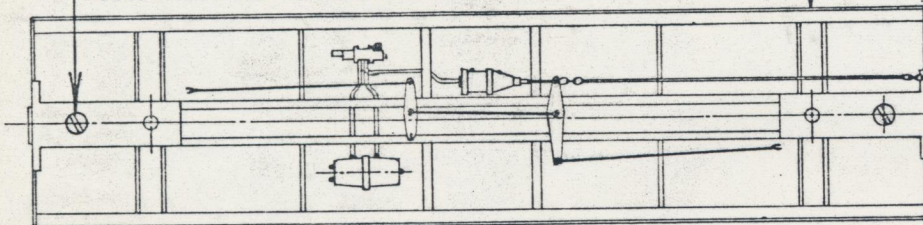


Use 5/16" staples for grab irons. Locate as shown

Mount air cylinder on block, built up from 1/16" left-over frame rib stock, to position as shown

#2 Wood screw holds combination bolster and coupler pocket, and coupler, in place. If necessary file head to clear truck axle

THESE VIEWS ACTUAL SIZE



Icing platforms may be fastened on with escutcheon pins, or if working hatches are desired, use 3/8" staples and hook lugs on hatch over wire, crimping or cementing in place

File opening to fit ice hatch

Form piping details and brake rods from wire. Cut levers from surplus eave molding stock

1/64 x 1/16 Roof Ribs

Bend roof grab irons from wire. Cement or solder to corner support leg

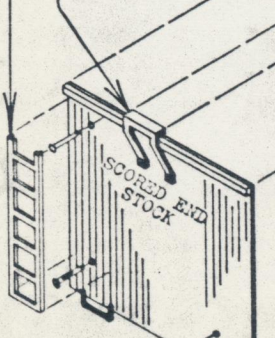
Round ends of roof ribs as shown

Ladders on sides and ends at opposite corners. Cement to car side, or drive escutcheon pin under top and bottom rung and solder to head of pin

Cement roof walk over roof ribs

Fasten Roof Walk End braces with Escutcheon pins and cement to underside of roof walk

Fasten Sill Steps with escutcheon pins. Cut off extra length of pin and use drop of cement to prevent working loose



WOOD END
WOOD SIDE
WOOD FLOOR

WOOD CENTER BEAM

RIB DETAIL ACTUAL SIZE

Make four 1/32" and four 1/16" thick ribs to template. Cement to center beam as shown

1/64 x 1/16 Eave Moldings

Trim car sides to lap over edges of scored end stock

Copyrighted 1948

MIDGAGE

Bend legs on staples to make this type grab iron

Cut off coupler shank and drill with 3/32 Drill



MODELS, INC.