

55	1	DECAL SET
54	1	PIPE TEE
53	4	GRAB IRON
52	1	RETAINER VALVE
51	2	GLAD HAND, HOSE \angle ANGLE COCK
50	16	EYE PIN
49	16	HINGE
48	1	BRAKE CYLINDER, TYPE 'K'
47	1	COUPLER POCKETS, A-B PAIR
46	2	BODY BOLSTER, LOWER
45	1	BRAKE WHEEL
44	8	NUT-BOLT-WASHER CASTING (NBW), 6 INCH
43	2	CHAIN, 25 LINKS/INCH x 1/2 LG
42	4	LADDER
41	4	STEP, INNER, STYRENE, .040 x .015 x 3/8 LG
40	4	STEP, STYRENE, .040 x .015 x 1-5/16 LG
39	4	STRAIGHT PIN, .020 x 1/2 LG
38	1	CENTER SUPPORT, 1/4 CHANNEL x 1-27/32 LG
37	2	BODY BOLSTER, UPPER, 1/4 CHANNEL x 1-27/32 LG
36	2	BRAKE LEVER, FLAT WIRE, 1/64 x 1/16 LGT AS REQ
35	1	BRAKE STAFF, WIRE, 1/32 x 2 LG
34	1	CYLINDER LINE, WIRE, .028 x 1/2 LG
33	-	BRAKE ROD, WIRE, .028, LENGTH AS REQ
32	4	TRUSS ROD, SHORT, WIRE, .028 x 3-5/16 LG
31	4	TRUSS ROD, LONG, WIRE, .028 x 4-1/4 LG
30	1	TRAINLINE, WIRE, .028 x 9 LG, APPROX.
29	-	PINNING WIRE, .012, LENGTH AS REQ.
28	2	UNCOUPLING ROD, WIRE, .015 x 1-3/16 LG
27	8	HANDLE, HATCH, WIRE, .015 x 1/4 LG
26	20	VAT BAND, COILED WIRE, .015 x 6 LG
25	1	RETAINER LINE, LOWER, WIRE, .015 x 5 LG
24	1	RETAINER LINE, UPPER, WIRE, .015 x 1-1/4 LG
23	2	BRAKE PLATFORM SUPPORT, 1/32 x 3/16 x 1/2 LG
22	1	BRAKE PLATFORM, 1/32 x 3/16 x 7 16 LG
21	1	ROOF SHEET, 1/32 x 1-29/32 x 8-17/32 LG
20	2	ROOF SUPPORT, INTERMEDIATE, 1/4 LG
19	4	ROOF SUPPORT, END \angle CENTER, 1/4 LG
18	1	CENTERSILL, DEEP FISHBELLY, 7-5/8 LG
17	1	ROOFWALK, 8-17/32 LG
16	4	ROOF SUPPORT EXTENSION, 1/32 SQ x 1/8 LG
15	4	BRAKE LEVER SUPPORT, 1/32 SQ x 3/8 LG
14	2	ROOFWALK SUPPORT, 1/32 SQ x 8-17/32 LG
13	2	CYLINDER MOUNT, 1/4 x 3/16 x 3/16 LG
12	2	FLANGE, CENTER SILL, 1/32 x 1/8 x 7 LG
11	8	NOTCH FILLER, ROOF SUPPORT, 3/32 SQ x 1/4 LG
10	6	FLOOR BOARD, NARROW, 1/8 SQ x 1-5/8 LG
9	1	CENTER BOARD, 1/8 x 3/16 x 1-5/8 LG
8	15	FLOOR BOARD, WIDE, 1/8 x 3/16 x 1-5/8 LG
7	2	END SILL 1/8 x 3/16 x 1-5 8 LG
6	2	SIDE SILL, 1/8 x 5/64 x 8-1/4 LG
5	4	BASE, MIDDLE, 1/4 x 3/16 x 1-43/64 LG
4	2	BASE, END, 1/4 x 3/16 x 1-27/32 LG
3	12	PILLER, 1/4 x 3/16 x 3/4 LG
2	4	FLOOR, VAT, STYRENE, 1-3/8 DIA x .020
1	4	VAT, 1-21/32 DIA. x 1-3/32 LG

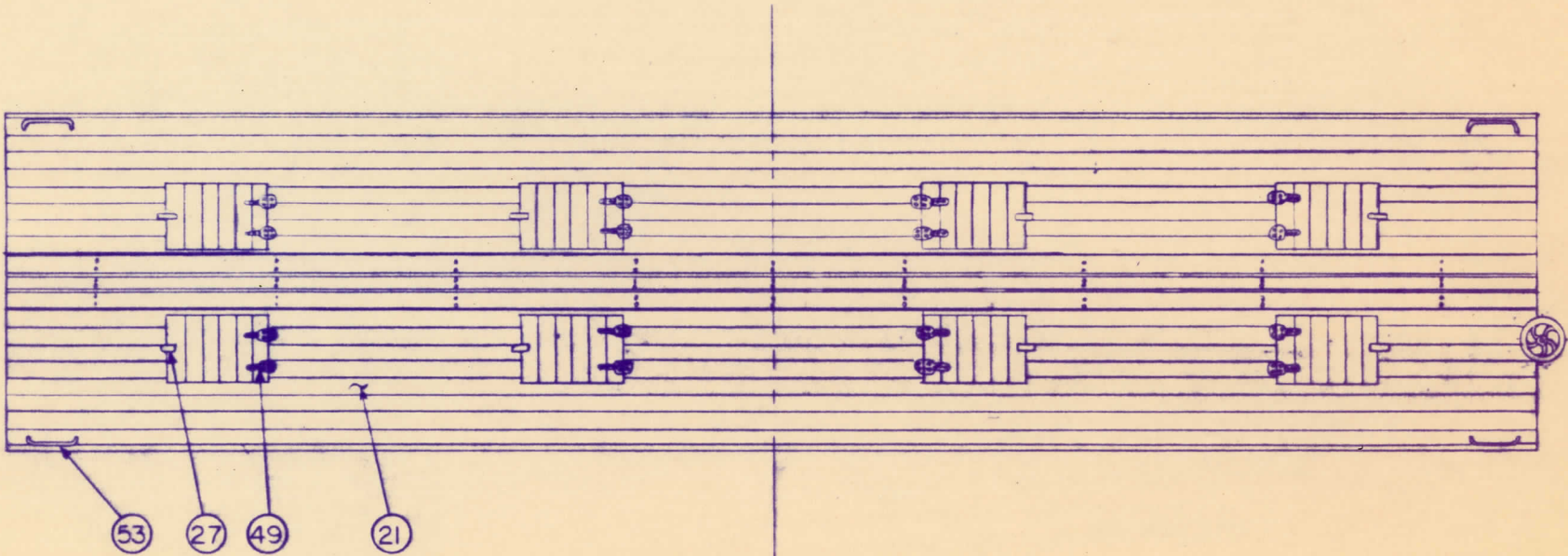
ITEM	QTY	DESCRIPTION
------	-----	-------------

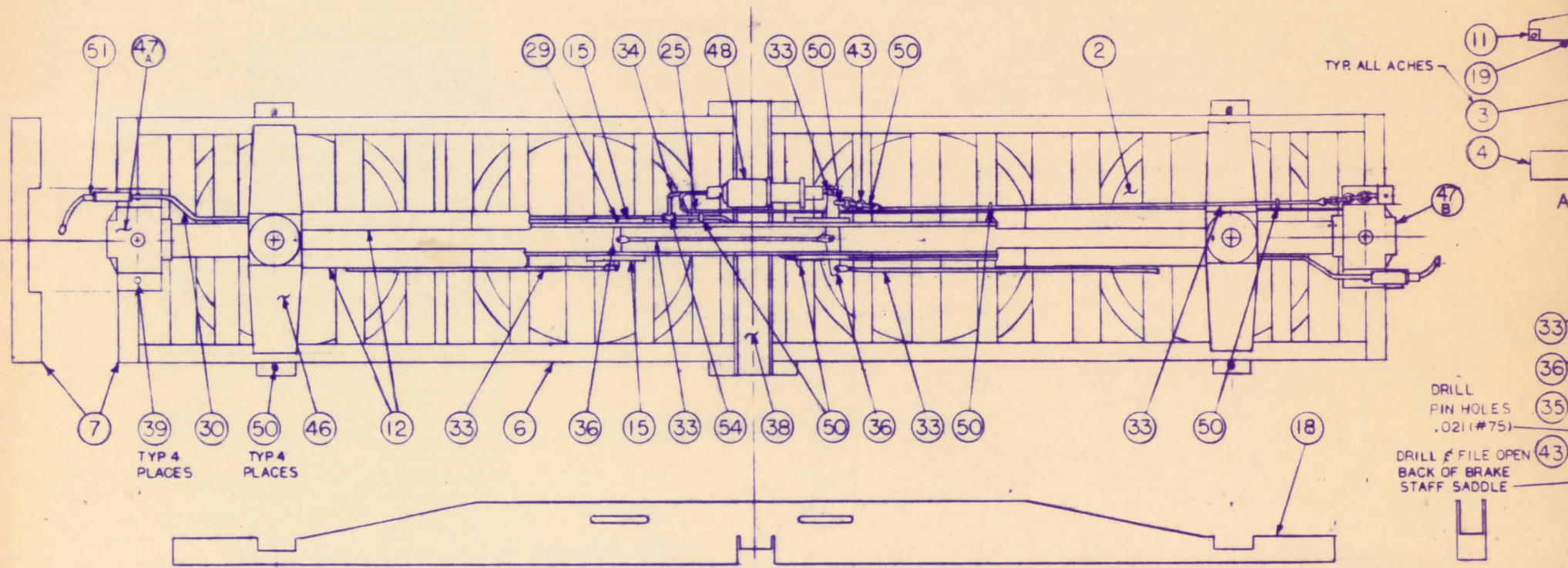
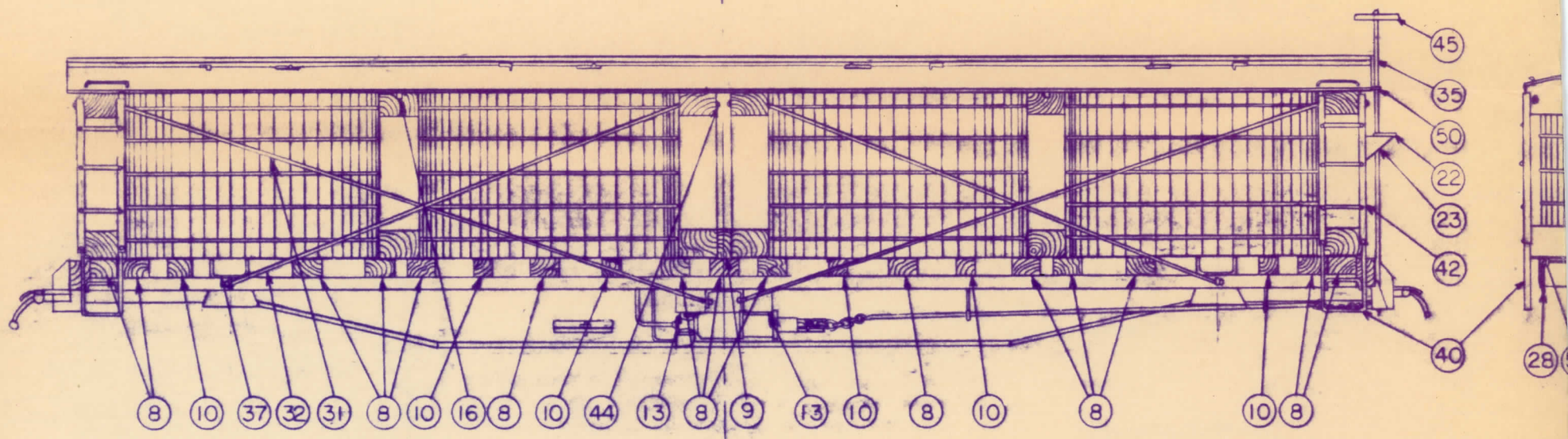
HOQUAT HOBBIES

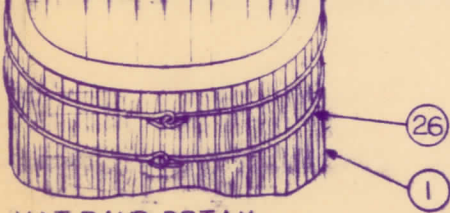
P.O. BOX 253 DUNELLEN, N.J. 08812

TITLE:
MONARCH PICKLE CAR

DRAWN BY: <i>Hant L. Singer</i>	SCALE: 3/16" = 1"
DATE: JUNE, 1986	NO. HH-3/21400

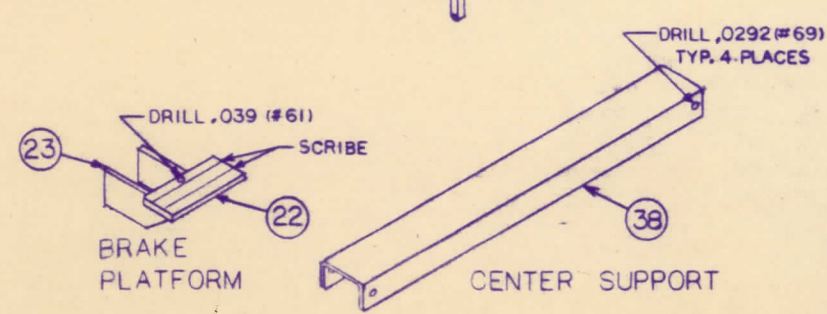
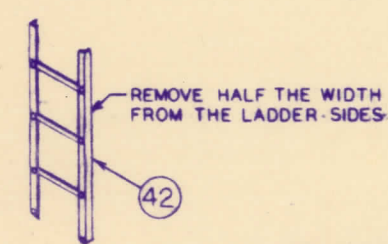
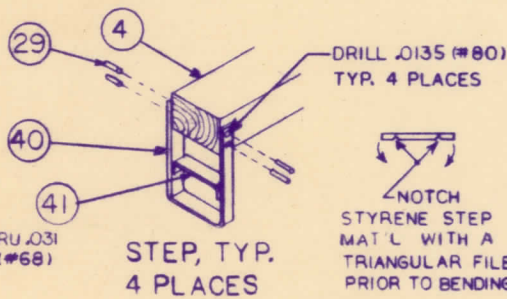
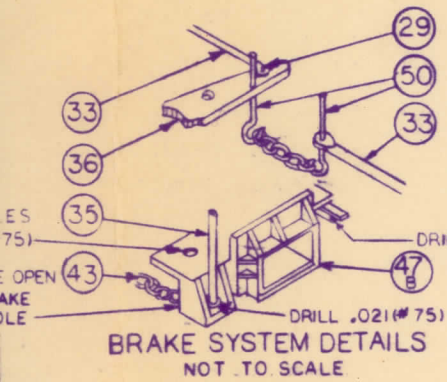
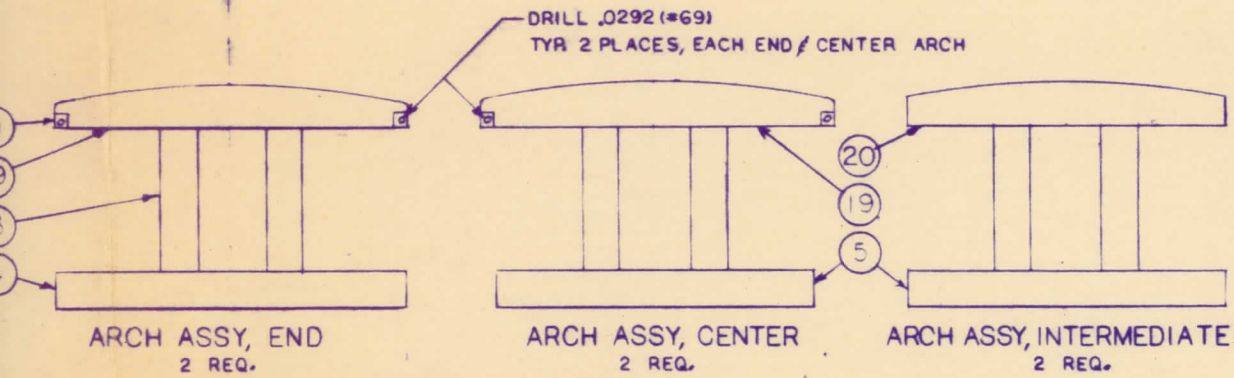
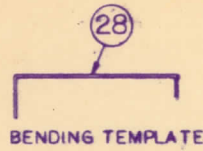
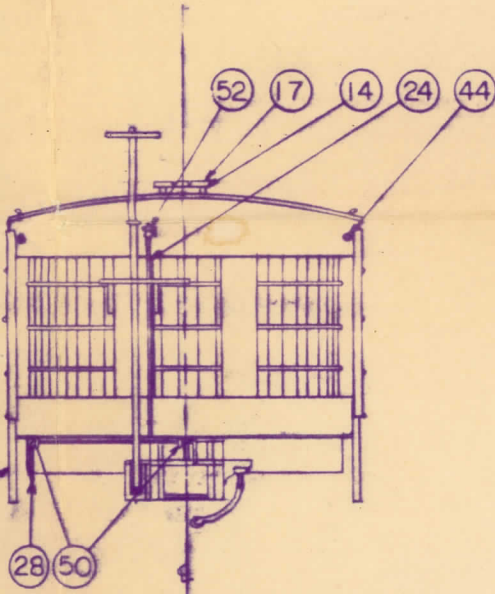
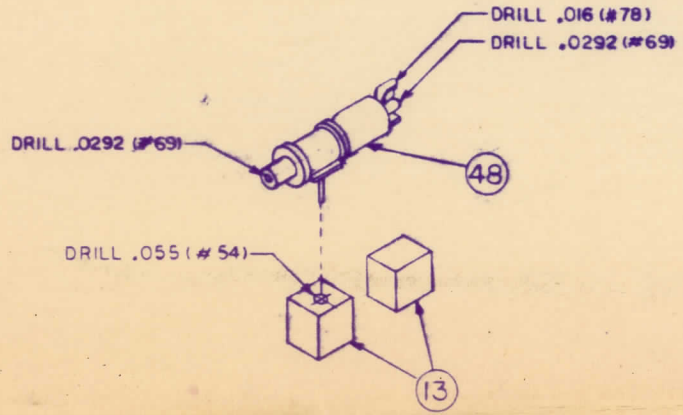


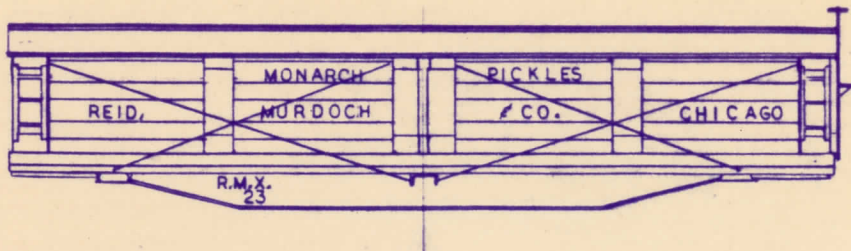
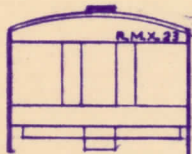




VAT BAND DETAIL

SCRIBE VATS & ROUGHEN WITH #60 GRIT SANDPAPER TO SIMULATE WOOD BOARDS.





PAINTING & FINISHING:

ENTIRE CAR: VENETIAN RED; 2 PARTS FLOQUIL BOXCAR RED (RR74)
TO 1 PART FLOQUIL CABOOSE RED (RR20).

TRUCKS: BLACK

PAINT CAR RED. WHEN DRY, COVER WITH HI-GLOSS, FLOQUIL RR3. USE SEVERAL COATS. APPLY DECALS USING SOLVASET. WHEN DRY, PRICK REMAINING AIR BUBBLES WITH A VERY SHARP PIN. BLEED IN SOLVASET. REPEAT AS REQUIRED. LET DRY. COVER WITH ONE OR MORE COATS OF FLAT FINISH, FLOQUIL RR15.

ADHESIVES:

WOOD TO WOOD: WHITE OR YELLOW GLUE (ELMER'S)

WOOD TO METAL (OR PLASTIC): CEMENT (AMBROID OR DUCO)

METAL TO METAL: ACC (EASTMAN 910 OR HOT STUFF)

TRUCKS: ARCH BAR